

Ormsjö/Dorotea - South Lapland

Ormsjö fishing area

Ormsjö is small village in a beautiful part of South Lapland, only 25 km from the village that named to this municipality-Dorotea..

The best of all-You will have endless fishing opportunities.. From the big lake Ormsjö, closest to the cabin, to a endless number of lakes and small rivers with h grayling and trout.

In late winter, You can do ice fishing for char and large perch. We will be happy to arrange the perfect fishing vacation to you.

Fish species

Pike and perch are the most common species in the Ormsjö lake system,. About 10 km from lake Ormsjö You have another very good lake for pike, perch and also big trout; Lake Avaträsk. This lake has a number of small islands and bays and is a good choice in strong winds, with plenty of protection and fishing opportunities.

Both those lakes are more then enough for a weeks fishing. But if You like, and against all odds the fishing is hard, a third alternative is the lake Bellviksjön.

This is a place where a number of +100 cm pike have been caught. Talk to the owner of the camp and he will gladly help You to pick the choice for the day.

Except pike and perch You also have wild char and trout in lakes and small rivers in the surroundings.



Fishing areas

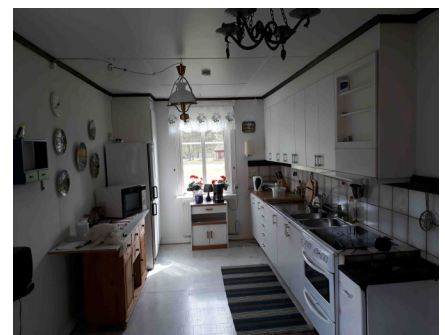
The Ormsjö lake is closest to the cabin , about 300 m from the house. It starts in the outlet of river Långseleån about 6 km from the cabin. This outlet is a popular place for fishing. The lake keeps big pike and perch, but is an open lake with not so many hidden positions by islands and bays. If the wind is strong we recommend a shift to the lake Avaträsk with a number of small islands and bays and a much more protected environment from strong winds. The area has two different licenses-one for Ormsjö and one for Avaträsk.

Fishing season

Fishing for pike is best during the month of June especially the weeks around mid-summer. But also July-September are very good for big pike and perch .Trout and char fishing has a first big peak in late June with the hatching of mayflies. In August –September sedges keeps the trout and char active.

Accommodation

Ormsjö cabin is situated only 300 m from the lakeside of Ormsjö and 10 km from lake Avaträsk. It's a single house and the only one that is focused on fishing tourism in the whole district of Ormsjö/Avaträsk. If you see other fishermen it's almost always locals in the village. Your group is almost guaranteed to be the only fishing group in this area. The house is very well adapted for fishing groups. It has a traditional and familiar atmosphere— and you are alone when you stay at this place. It has two floors, three bedrooms, 5 beds (+ possibility for one extra bed), a fully equipped kitchen as well as bathroom, TV and WiFi. This is the perfect place for a group of 4-6 fishermen and an excellent choice for a fishing group.



Fishing regulations

Pike over 75 cm: Catch & Release

Trout, char, grayling and rainbow trout:

In rivers all fishing is forbidden between:

Pike under 75 cm: One pike/fisherman and day is allowed to keep.

Min size 30 cm. One fish/fisherman and day is allowed to keep

15/4 – 31/5 and 1/9–31/10

Transportation

By car: Follow the E4 north from Stockholm. After passing the town Sundsvall you take left at Timrå on the road 331- leading to the village Hoting. Turn right on road E45 towards Dorotea. At the final crossing leading to Dorotea (right) take left towards Ormsjö village.

GPS:

WGS84 decimal (lat, lon): 64.386699, 16.097846

RT90 (nord, öst): 7142368, 1514134

Salmo Lapland AB

Tel: +46-(0)70- 625 97 30

c/o Näckrosv. 7

greger@salmolapland.se

903 52 Umeå

www.salmolapland.se